



ESTHETIC SKIN INSTITUTE

The number one choice in medical esthetic training
and certification since 1997





MISSION STATEMENT

The Esthetic Skin Institute, Inc.™ (ESI) is dedicated to the advancement and empowerment of the medical professional by promoting and providing high quality, hands-on educational certification programs in order to develop mastery of skills, delivery of safe and effective services, and to promote collaborative partnering and mutual respect in the Medical Esthetic community.

Esthetic Skin Institute's courses are designed for the medical professional seeking to transition into this exciting new specialty of Medical Esthetics. These advanced courses feature comprehensive skill building based on research and clinical application. With ESI's low student to instructor ratio, our intense afternoon hands-on sessions led by our expert instructors will provide a tailored one-on-one experience. Integrated into the workshops is pertinent information relating to various aspects of business, including policies, protocols, H/P forms, consent forms, pricing, and the patient-practitioner relationship.

Quality Training Since 1997

AFFILIATIONS



Register Now 866.463.6881 or www.esiw.com

Art & Science of Botulinum Toxin Type A®

Program Overview

This comprehensive one-day CME-CE hands-on training and certification workshop, explores the fundamental cosmetic applications employed by expert injectors of FDA approved neurotoxins (BoNTA). During the morning didactic, historical perspective on the use of botulinum toxin A (BoNTA) as well as a brief analysis of Botulinum Toxin B will be presented. Significant focus and interactive review of pertinent facial anatomy and physiology (the cornerstone of safe and effective treatment) presented will assist you to confidently determine the best treatment plan for your patients. This CME course offers the fundamental instruction of mapping and injection techniques for the most frequently asked areas of the upper face (glabella frown lines, crow's feet, horizontal forehead lines, bunny lines, brow lift). Included will be a brief overview of treatment for hyperhidrosis, dental applications, and other advanced treatment areas of the lower face. Other pertinent information will include mechanism of action, safety and efficacy issues, management and treatment of complications, dilution guidelines, and more. Videos and live demonstration explaining procedure and techniques will bolster your knowledge to ultimately prepare you for the hands-on practice sessions. With ESI's low student to instructor ratio, our intense afternoon hands-on sessions led by our expert instructors will provide a tailored one-on-one experience. Each attendee will receive a disc loaded with business and practice documents such as standardized procedure and protocol policies, purchasing sources, short procedure video, and more.

8.5 AMA PRA Category 1 Credits™

8 Contact Hours (CE) for nurses and NP's.

Register Now 866.463.6881 or www.esiw.com





The Art of Dermal Fillers

Program Overview

This comprehensive one-day CME-CE hands-on training and certification workshop, will prepare you to understand the creative and artistic aspects of dermal fillers, and give you the injection techniques and pearls to create your patient's desired look. The morning didactic will present history, development, and characteristics of dermal fillers (Restylane, Restylane Lyft, Restylane Silk, Juvederm Ultra, Juvederm Ultra Plus, Voluma, Radiesse, Belotero, Sculptra, Bellafill and Silicon1000). Lecture will focus on the aging face, principles and practices for achieving optimal results for facial shaping as well as wrinkle/fold reduction and basic facial rejuvenation with the use of dermal filling agents. This comprehensive didactic will speak to safety issues, potential complications/ adverse events, and management thereof. Presentation will include the proper consultation process, pain management, selection criteria of filling agents, establishing realistic patient expectations, and patient education to ensure positive patient outcome. Videos and live demonstrations explaining procedure and techniques will bolster your knowledge to ultimately prepare you for the hands-on practice sessions. With ESI's low student to instructor ratio (4-5:1), our intense afternoon hands-on sessions led by our expert instructors will provide a tailored one-on-one experience. Hyaluronic acid fillers will be used for the hands-on portion of the workshop. Each Attendee will receive a disc loaded with business and practice documents such as standardized procedure and protocol policies, purchasing sources, short procedure video, and more.

8.5 AMA PRA Category 1 Credits™

8 Contact Hours (CE) for nurses and NP's.

Sclerotherapy Solutions: Visible Cosmetic Telangiectasias

Program Overview

This comprehensive one-day CME-CE hands-on training and certification workshop, will prepare you to safely administer sclerotherapy for what is still considered the “gold standard” for the treatment of telangiectasias and reticular veins. Morning didactic lecture will address related anatomy, physiology and pathophysiology pertaining to the lower extremities as well as facial telangiectasias. Presentation will include basic theories of treating cosmetic visual telangiectasias and reticular veins, identification of the different types of veins, treatment considerations, injection techniques, sclerosing agents currently being used, and the use of lasers in vein therapy. Importance will be placed on safety issues, avoiding potential complications/adverse events and management thereof. Presentation will include the proper consultation process and importance of patient education to ensure compliance and positive patient outcome. Live demonstration explaining technique and one-on-one injection guidance will bolster your knowledge to ultimately prepare you for the hands-on practice sessions supervised by our “expert” instructors. You will gain insight and pearls on the “how to” business model and integration of aesthetic services and more. Each attendee will receive a disc loaded with business and practice documents such as standardized procedure and protocol policies, purchasing sources and more.

9 Contact Hours (CE) for nurses and NP’s

Physicians and Physician Assistants: *This course is designed with optimal criteria which may be eligible for CME Category II credit which are self-submitted by the practitioner to their respective State Board.*

Register Now 866.463.6881 or www.esiw.com

Kybella, Mesotherapy & Carboxytherapy

Workshop Overview

This comprehensive one-day hands-on training and certification workshop explores the fundamental cosmetic applications employed by expert injectors of Kybella® (deoxycholic acid). The first FDA approved drug of its kind with an indication for submental fullness (double chin). We will discuss Kybella® safety, side effects, contraindications, patient selection, treatment protocols and mapping, pre and post treatment considerations. We will also cover Mesotherapy and Carboxytherapy which are top esthetic procedures in Europe, South America, Mexico, and Asia. Mesotherapy is used to treat localized fat and cellulite reduction, skin tightening, skin rejuvenation, and more. The didactic presentation will include a historical perspective on Mesotherapy, Lipotherapy, Lipodissolve, and Lipolysis. We will discuss the mechanism of action, contraindications, precautions, patient selection and education. Numerous aesthetic applications (i.e., cellulite reduction, body and facial sculpting of fat, face and neck rejuvenation (Mesolift / MesoGlow), and alopecia) will all be presented. Lastly we will present on Carboxytherapy. Carbon dioxide is a natural constituent of our own bodies and is a non-embolic gas making it extremely safe. Its' proponents say it **assists in destroying localized fatty deposits**, improves skin elasticity, circulation, encourages collagen repair, improves the appearance of fine lines and wrinkles, helps in hair growth. Live demonstrations will be performed explaining procedure and techniques to bolster your knowledge and ultimately prepare you for the hands-on practice sessions in all 3 modalities.

8.5 Contact Hours (CE) for Nurses and NP’s.

Physicians and Physician Assistants: *This course is designed with optimal criteria which may be eligible for CME Category II credit which are self-submitted by the practitioner to their respective State Board.*

Register Now 866.463.6881 or www.esiw.com



Advanced Sculptra Body & Brazilian Butt Lift

Workshop Overview:

This comprehensive one-day hands-on training and certification workshop explores the advanced cosmetic applications employed by expert injectors of FDA approved injectable poly-L-lactic acid-PLLA (Sculptra).

This course offers injection techniques for the most frequently requested advanced areas of the body (Butt, Chest, Knees, & Décolletage). Pertinent information to include mechanism of action, safety and efficacy issues, management and treatment of complications, dilution guidelines, and more. A live demonstration explaining procedure and techniques will bolster your knowledge to ultimately prepare you for the hands-on practice sessions.

Sculptra Aesthetic is FDA approved in the U.S. and has been used worldwide since 1999. Sculptra Aesthetic contains a synthetic material called poly-L-lactic acid, which is a biocompatible, biodegradable substance that is gradually and naturally absorbed by the body. Sculptra works by stimulating one's own body to produce collagen in response to the PLLA, its main component. It takes 2-3 months to appreciate the correction from Sculptra and the results should last years because newly formed collagen lasts 7 years in other areas of the body.

Physicians and Physician Assistants: *This course is designed with optimal criteria which may be eligible for CME Category II credit which are self-submitted by the practitioner to their respective State Board.*

Advanced Botulinum Toxin A & Dermal Fillers

Workshop Overview

This one-day “premiere” Advanced Dermal Filler and Botulinum Toxin A workshop will greatly elevate the results you are able to achieve when performing procedures and will increase the satisfaction of your patients. The live demonstrations and hands-on workshop is designed for experienced injectors who desire to enhance their injection techniques and creative skills. The presentation will include understanding facial aging, the “New Face” and Liquid Face Lift” with the use of Dermal Fillers and Botulinum Toxin A in the upper and lower face. Discussion will include the use of hyaluronic acids (Restylane®, Restylane Lyft®, Restylane Silk®, Voluma®, Juvederm®, Belotero®), and Radiesse® as dermal filling agents. Learn how to use dermal fillers under the eyes to diminish the dark circles and hollowing effect caused by aging, volumize the cheeks and mid-face structure, sculpt the jawline to minimize jowls, enhance earlobes, injecting hands for a more youthful appearance, and more. Learn to inject Botulinum Toxin A (Botox®, Dysport®, Xeomin®) for bunny lines, vertical lip lines, chemical brow lift, mentalis, down turned mouth, platysmal bands, under eye bulge, correcting asymmetries, and more. Our expert injectors will provide a one on one injection guidance to help you master distinct and creative techniques to achieve optimal aesthetic results.

7.5 Contact Hours (CE) for nurses and NP’s.

Physicians and Physician Assistants: This course is designed with optimal criteria which may be eligible for CME Category II credits which are self submitted by the practitioner to their Respective State Board.

PLLA: A Bio-Stimulatory Approach to Facial Rejuvenation Sculptra®

Prerequisite Criteria: This course is designed for the experienced injector (6mo-1yr of continuous injecting experience with dermal filling agents). The treatment must be performed by specially trained medical professionals.

PLLA also known as PolyLactic Acid (Sculptra Aesthetic®) works to replace lost collagen. As we age our collagen production decreases and we see the development of facial wrinkles, sagging skin, loss of facial volume, and facial folds. PLLA (PolyLactic Acid) works to correct shallow to deep facial wrinkles and folds due to its bio-stimulatory effect on collagen providing a refined, more youthful looking appearance. Generally, three injection sessions are needed spaced over a period of several months, whereby noticeable results emerge subtly with lasting results over two years. This one-day “premiere” hands-on workshop will provide a morning didactic overview of history, chemical and biological properties, biodegradation, facial anatomy and physiology, facial aging, and appropriate selection of indications for treatment. Presentation will include contraindications, complications and side effects, and prevention & management of complications. During the training you will learn special techniques to correct deep folds, sunken cheeks, wrinkles and lines in the cheeks or chin, and deep scars. Live demonstration explaining the procedure and techniques will bolster your knowledge to ultimately prepare you for the hands-on practice sessions. With ESI’s low student to instructor ratio, our intense afternoon hands-on sessions led by our expert instructors will provide a tailored one-on-one experience.

8 Contact Hours (CE) for nurses and NP’s.

Physicians and Physician Assistants: This course is designed with optimal criteria which may be eligible for CME Category II credits which are self submitted by the practitioner to their Respective State Board.

Platelet Rich Plasma Aesthetics and Hair

Program Overview

This comprehensive one-day hands-on training workshop explores the multiple cosmetic applications of Platelet Rich Plasma. The morning didactic presentation will include: PRP theory and mechanism of action, Optimal level of platelets needed for angiogenesis (studies noted), is more better and does equipment matter, PRP as a stand-alone treatment and how it differs from the Vampire Lift[®], Fat Grafting and PRP, PRP used in combination with Ablative Fractional Laser, RF and high intensity Ultrasound (deep dermal heating) devices. Discussion of complementary modalities used with PRP to enhance treatments, such as micro-trauma techniques, micro-needling, photo-stimulation, oral stem cell attractants, and techniques from Asia which incorporate the use of PPP (Platelet Poor Plasma). Primary focus regarding treatment protocols will be on the most popular areas requested for treatment (facial and neck aging), however, treatment protocols for scars, acne, stretch marks, hand rejuvenation, hair loss, and cellulite will be presented.

The afternoon hands-on session will provide a live demonstration employing multiple injection techniques, and then hands-on participation by attendees on live models.

During the course you will gain valuable insight and pearls on the how to create your own unique PRP business model for optimal success. We will discuss price structuring, market trends, and retention of your client base.

8 Contact Hours (CE) for nurses and NP's.

Physicians and Physician Assistants: *This course is designed with optimal criteria which may be eligible for CME Category II credits which are self submitted by the practitioner to their Respective State Board.*

Platelet Rich Plasma (PRP) for Simple Sports Medicine

Program Overview

This comprehensive one-day hands-on training workshop explores the applications of Platelet Rich Plasma (PRP) for simple sports medicine, orthopedic purposes, and stimulation of tissue healing. The focus will be on the most common areas requested and needed for treatment in both athletes and non-athletes. The presentation will include an introduction to the history and new developments on the use of PRP as well as a brief analysis of its physiologic components and benefits. Significant focus on pertinent tissue anatomy and physiology (muscle, tendon, bursa, bone and joint) will be presented, as well as diagnostic criteria that will assist the student in choosing when and how to treat (the cornerstone to safe and effective treatment). The presentation will also include discussion of the mechanism of action, safety and efficacy issues, management and treatment of complications, activation guidelines, and comprehensive information on proper injection techniques and placement, for the desired outcome. Our intensive hands-on session will include Diagnostic Musculoskeletal Ultrasound criteria for identifying, visualizing, diagnosing and mapping areas for injection and actually observing and assisting in the injections when applicable. Musculoskeletal Ultrasound Needle Guidance will also be discussed and observed in order to help maximize the effectiveness of treatment and adequate PRP placement.

Physicians and Physician Assistants: *This course is designed with optimal criteria which may be eligible for CME Category II credit which are self-submitted by the practitioner to their respective State Board.*



PDO Thread Lift

Program Overview

Thread Lift or PDO (Polydioxanone) Threads, is a new technique offering a subtle and natural looking lift which can generate collagen and elastin with the effects lasting typically 2 years. PDO Threads may be combined and compliment many existing modalities with very few contraindications and side effects. The use of PDO Threads shows visible results of rejuvenation and pathological stimulation of as much as 100% new collagen. Patients confirm increased skin rejuvenation, skin lifting, brightened skin tone, increased volume, and an improvement in skin wrinkles. The procedure is minimally invasive with no scarring and requires little to no downtime.

This fundamental course will address: History, Chemical & Biological properties, Biodegradation, indications for use, contraindications, complications and side effects. Presentation will include prevention and treatment of complications as well as technique considerations for optimal results. Areas of treatment will cover: double chin, forehead, jaw v-lifting, drooping cheeks, neck folds, marionette lines, nasolabial folds, and sagging skin. In addition, we will discuss the use of PDO Threads on the body including abdomen, hips, hands, neck and chest, buttocks, inner thighs, knees and more. Live demonstration explaining the procedure and technique will bolster your knowledge to prepare you for the hands-on practice sessions. Each attendee will receive a disc loaded with business and practice documents such as standardized procedure and protocol policies, purchasing sources and more.

7 Contact Hours (CE) for nurses and NP's.

Physicians and Physician Assistants: *This course is designed with optimal criteria which may be eligible for CME Category II credits which are self submitted by the practitioner to their Respective State Board.*

Register Now 866.463.6881 or www.esiw.com

The Science of Skin Rejuvenation

Program Overview

This two-day hands-on training workshop will focus on pertinent anatomy and physiology of the skin, assessment, evaluation, and classification of different skin types using the Fitzpatrick Model. We will explore factors affecting skin health and rejuvenation measures, as well as conducting a comprehensive client history, effective skin analysis, and developing an individualized plan of treatment for aged, acne, rosacea, and/or pigmented skin. Presentation will include contraindications and side effects of chemical peeling, and management of adverse events. We will explore different types of chemical peels available (Glycolic, Lactic, MFA's, Salicylic, TCA, Vitamin A Acid, Jessner), and their characteristics and differences. You will learn various application techniques for chemical peeling, and micro-dermabrasion through practical hands-on sessions. In addition we will present and practice Dermaplaning, Hydrafacial, and Microneedling all tools for skin rejuvenation. Live demonstrations explaining the procedures and technique will bolster your knowledge to prepare you for the hands-on practice sessions. A course specific, "How To" business model overview will be presented about the importance of retail sales, price structuring, market trends, effective marketing, development and retention of client base. Each attendee will receive a disc loaded with business and practice documents such as standardized procedure and protocol policies, purchasing sources and more.

12.5 Contact Hours (CE) for nurses and NP's.

Physicians and Physician Assistants: *This course is designed with optimal criteria which may be eligible for CME Category II credits which are self submitted by the practitioner to their Respective State Board.*





Preceptorship Training

One-On-One Hand's On Preceptorship Training

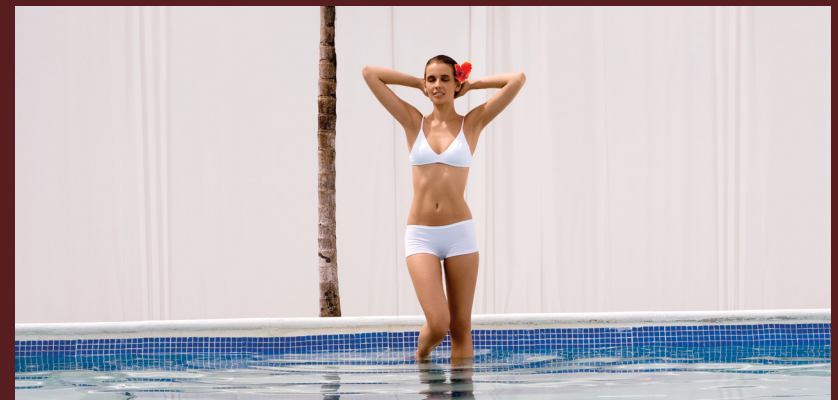
The Esthetic Skin Institute offers a one-on-one hand's on preceptor training program at select locations around the country to help the attendee develop, perfect, and master their skills. During your session you will have the opportunity to inject 3-10 patients (your choice) with Botulinum Toxin A and a variety of different FDA approved Dermal Fillers in a medical setting with one of our esteemed faculty. Each precept session is customized to your needs. Come spend time with us, get your questions answered, and further your skills. The clinical experience gained has been rated 5 Stars by our previous attendees.

Call for more details 866-463-6881

Setting Up Your Esthetic Practice From A-Z

Program Overview

This one-day 8 hour course will give you the tools and information you will need to get your business up and running. Almost everyone falls prey to lack of organization and planning. Now you don't have to. A step-by-step guide and presentation will address in depth topics such as: What kind of setting do I want to practice in and a comparison of costs associated with each setting? Do I need a corporation, if so what kind of corporation? How do I manage the financial records of my business? What equipment and products do I need? Where do I get my products and equipment? How much inventory do I need? Do I need other staff? Where can I borrow money to start my practice? How to find a Medical Director and structure compensation without violating laws? These are only a fraction of the topics which will be addressed in class. You will receive a proforma template with a sample 3yr financial projection so you can visualize the financial performance of your business. Building a menu of services, floor planning, staff training and development, marketing strategies, pricing and purchasing, the competition, positioning for the future, and legal issues are just some of the other areas for discussion.



Register Now 866.463.6881 or www.esiw.com

Many of our classes are CME Category 1 and CE Approved:

TARGET AUDIENCE

Our activities have been designed to meet the educational needs of clinicians (physicians, registered nurses, nurse practitioners, licensed practical nurses, physician assistants, and dentists) involved in the care of patients seeking aesthetic enhancement procedures.

PHYSICIAN CONTINUING EDUCATION

Chesapeake Health Education Program, Inc. is accredited by MedChi, The Maryland State Medical Society, to provide continuing medical education for physicians. Chesapeake Health Education Program, Inc. designates most of our educational activities for maximum AMA PRA Category 1 Credits™. Physicians should only claim credit commensurate with the extent of their participation in the activity.

NURSE CONTINUING EDUCATION

Contact Hours (CE) for nurses and NP's.

These courses are co-sponsored by Educational Dimensions® and the Esthetic Skin Institute, Inc.™ CE fees are underwritten by an education grant by Esthetic Skin Institute, Inc. and the speaker as an employee, hereby declares a vested interest. Educational Dimensions®, the Continuing Education Provider for this education activity, is philosophically dedicated to the provision of quality continuing education to nurses and does not endorse products or services provided by the speaker's company. Provider Approved by the California Board of Registered Nursing, Provider #08747, the Florida Board of Registered Nursing, Provider # 50-574, the Iowa Board of Nursing Provider # 317, and the West Virginia Registered Professional Nurses, Provider # WV97-0217RN.

Quality Training Since 1997

Register Now 866.463.6881 or www.esiw.com



CERTIFICATION IN:

Botox/Dysport/Xeomin

Dermal Fillers

Meso/Lipotherapy

Carboxy Therapy

Sclerotherapy

Chemical Peels

Microdermabrasion

PRP Aesthetics & Sports

PDO Thread Lift

Sculptra

Advanced Sculptra Body and Butt

Advanced injectables

Micro-cannula

And more...



ESTHETIC
SKIN INSTITUTE

ESTHETIC SKIN INSTITUTE

1-866-463-6881 • www.esiw.com

Quality Training Since 1997